

DERCO



Profiles



Based on years of experience, and to meet the needs of our customers, DERCO has developed over 20 types of profiles.

Many of these profiles are available in our standard product range. Profiles can also be applied on request to flat surface belts, provided the base belt meets the requirements for the particular profile.

There are numerous reasons for profiling a belt: e.g. increasing the inclination capacity of belts running under dirty circumstances; decreasing friction for accumulation; lowering of product adhesion for sticky products; marking the bottom side of chocolate products; dehydrating in the fish industry, etc.

DERCO



We produce profiles in 1250mm, 2000mm and 3000mm widths. Not all profiles are made in all widths. Please check with DERCO for the width of the profile in which you are interested.

In this brochure, you will find an overview of DERCO's profiles, including application information. We invite you to contact us regarding new applications and requirements.

profiles 100%



bn
nipple 5 mm

- incline/decline of bags in dusty or dirty situations
- lagging material on drums in agricultural applications



cr
crossrib

- guide strips
- lagging material on drums
- incline/decline of bags in dry situations



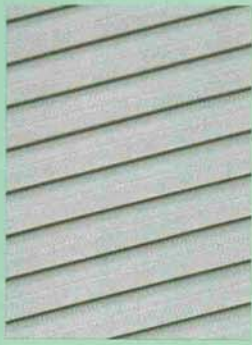
bw
basketweave

- incline/decline of bags and boxes



cr15
crossrib 15 mm

- incline/decline of long and round products



d
diagonal

- lagging material on rollers in textile industry



r12
square 12 mm

- incline/decline of lightweight and small bulk goods



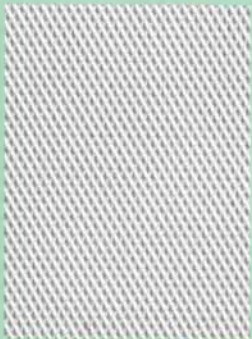
fbo
fishbone (open)

- transport of wet products, where a path is required for water runoff



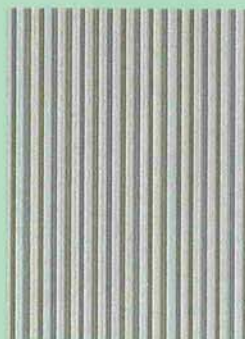
lg
lowgrip

- incline/decline of wet piece goods
- packed frozen food



fr
square 1 mm

- transport of pizza dough
- transport of sticky products in the candy industry



lr
longitudinal rib

- incline/decline of packaged goods
- transport under dusty or wet circumstances



fbc
fishbone (closed)

- incline/decline of lightweight bulk materials



m
matt finish
• for accumulation on the belt

gm
course matt

- accumulation of light products



tw
twisted wire

- dough transportation and processing



mc
meatcleat

- incline/decline transport of meat products



mg

minigrip

- incline/decline of bags and boxes



r

inverted diamond

3 mm

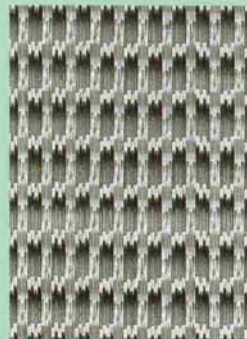
- on bottomside of a belt for roller and sliderbed support
- transport of dough



mm

M&M

- on profiling and cooling belt for chocolate products



sg

supergrip

- incline/decline of bags and boxes in dry and clean situations



mr

multirib

- machines for optical sorting and packing



sb

sandblast

- lagging material on drums



n

nipple 1 mm

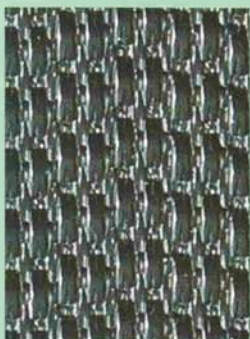
- lagging material on drums
- in industrial laundries
- incline/decline under limited angle of lightweight products



gr

square 62 mm

- check-in belt on airports



wg

wavegrip

- Inclined/declined transport of luggage e.g. at airports and parcel transport in post offices * offering reduced noise levels on return idlers



sio

small inverted

oval

- treadmills



r20

square 20 mm

- wood processing
- sanding belts



tn

tobacco nipple

- incline/decline of tobacco



st/cst

sawtooth

- fish industry
- incline/decline of tea leaves



io

inverted oval

- treadmills
- incline/decline of bags



tr

triangle

- fish filleting machines
- meat flattening machines



pp

pebbles

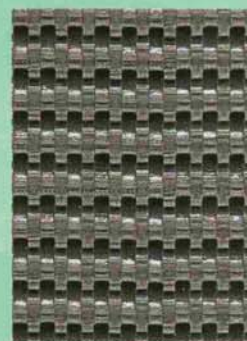
- meat processing machines
- fish filleting machines



w

fabric impression

- treadmills
- in the packing industry



hg

halfgrip

- treadmills
- incline/decline of bags



md

diamond 2 mm

- dough transportation and processing

DERCO



**Quality Develops
Reliability**